

TECHNICAL DATA SHEET

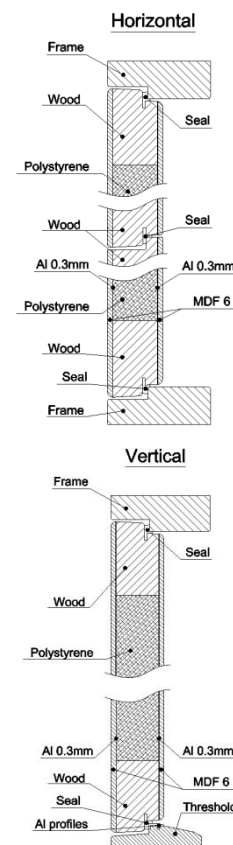
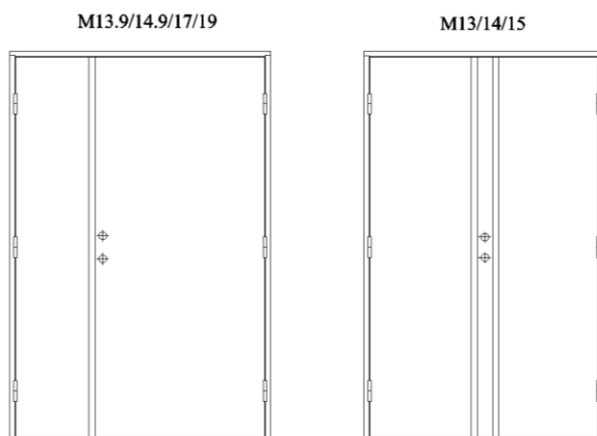
VMT double exterior doors

Use	Doors for use externally in houses and apartments.	
Class	Unclassified.	
Technical data	Sound insulation:	31dB
	Thermal transmittance:	$U=0,87/1,2 \text{ W/m}^2\text{K}$
Dimensions	See Table1.	
Door leaf	Construction:	Door leafs with polyurethane foam core, moist resistant MDF/Al sheets and wood frame. Composite glass list.
	Surface:	White paint (NCS S0502-Y)
Fittings	Door leaf:	Lock: DORMA 9132 Hinges: 3248 (door part) 3+3pcs. Seal: S3417
	Frame:	Lock plate: DORMA DS9001 Hinges: 3248 (frame part) 6pcs.
Weight Module M13.9x21:	Door leaf (VMT06)– 55 +30kg Frame M21x10 105mm – 20kg	
Additional information	All door sets include standard frames. Door leaf is impregnated with special moist resistant primer.	
Product assembly and storage instructions	Product assembly and installation instructions can be found within a package of product. For product maintenance and instruction of complains see "Product description".	
Production and raw material supervision of the quality	Quality and origin of materials used in production of TORSO products are strictly controlled through all production and management processes in accordance with the relevant environmental management and control.	
Product quality warranty:	Warranty period of 5 years after the purchase. For more detailed information about quality complaint submission and definition of production guarantees, see "Product description".	

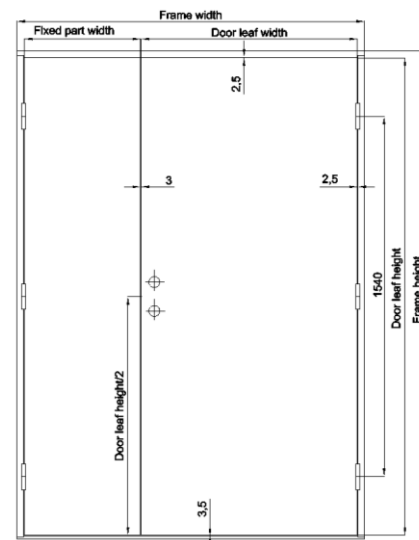
Table 1.

Module	Fixed part dimensions,mm		Door leaf dimensions,mm		Frame dimensions,mm	
	Width	Height	Width	Height	Width	Height
M13x21	561	2040	661	2040	1286	2089
M14x21	611	2040	711	2040	1386	2089
M15x21	661	2040	661	2040	1486	2089
M13.9x21	409	2040	925	2040	1398	2089
M14.9x21	509	2040	925	2040	1498	2089
M17x21	825	2040	825	2040	1714	2089
M19x21	925	2040	925	2040	1914	2089

Available combinations



1pic. Section views



*for available designs see attachment "VMT exterior doors".